

Build  
Your  
Own

# TWEETSIE<sup>®</sup>

## RAILROAD

# 3-D

# Cowboy Cantina

## ASSEMBLY INSTRUCTIONS

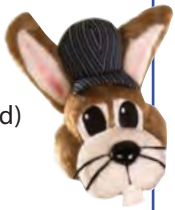
Time to complete: Approx. 15 minutes • Difficulty level: Easy



### GET STARTED

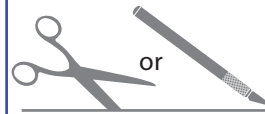
#### materials:

- Metal-edged Ruler
- Glue (tacky craft glue or rubber cement)
- Butter knife (recommended)
- Scissors or craft knife (have an adult help)



**1.** Print out with a color desktop printer. Use "fit to page" option if needed, and set to maximum print area. Regular copy paper will work, heavier paper like card stock may work better.

**2.** Use scissors or a craft knife to cut out all the pieces along outer edges and where shown in pink. Have an adult help.



**3.** To help with folding, score all the pieces using the ruler for a guide and run the back side of the butter knife along the corner edges and tabs. Fold back all corners & tabs. (most all fold back to create a "peak" fold)



An example of a "peak" fold.



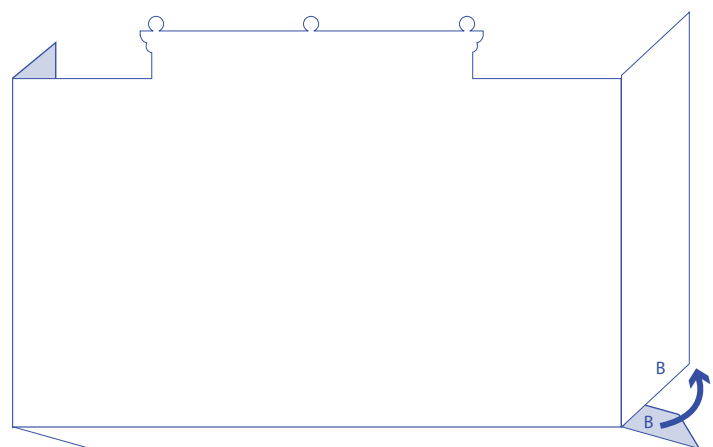
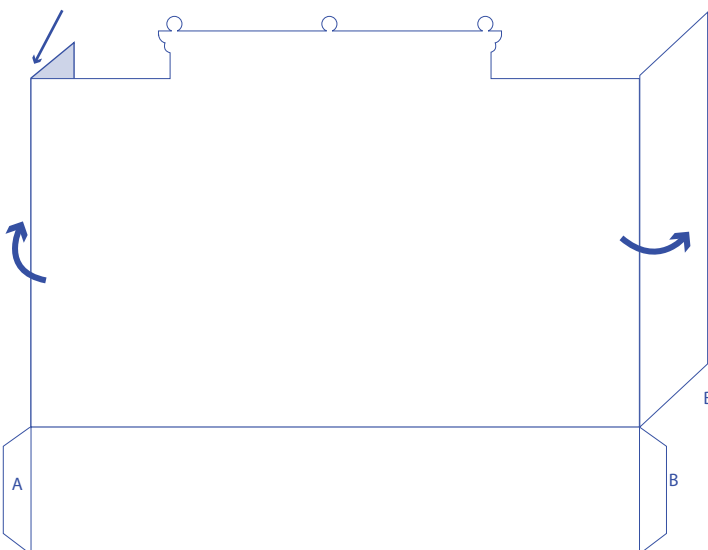
An example of a "valley" type fold.



### ASSEMBLY OF YOUR TWEETSIE TOWN, COWBOY CANTINA

**4.** After everything is cut, scored & folded, start with the corners of the building. Begin with tab A & glue to edge A, then fold the front & glue tab B to edge B. It's basically a box.

4a. Fold the Two vertical sides as shown.



4b. Fold the bottom and glue tabs A & B as shown.

**TWEETSIE.COM** Visit our Web site to find out more about Tweetsie Railroad, and how to plan your next visit to our theme park for **YOUR** Wild West Train Adventure!



©Copyright 2012 Tweetsie Railroad. All rights reserved.  
Tweetsie Railroad | 300 Tweetsie Railroad Lane  
Blowing Rock, NC 28605 | 800-526-5740 | tweetsie.com